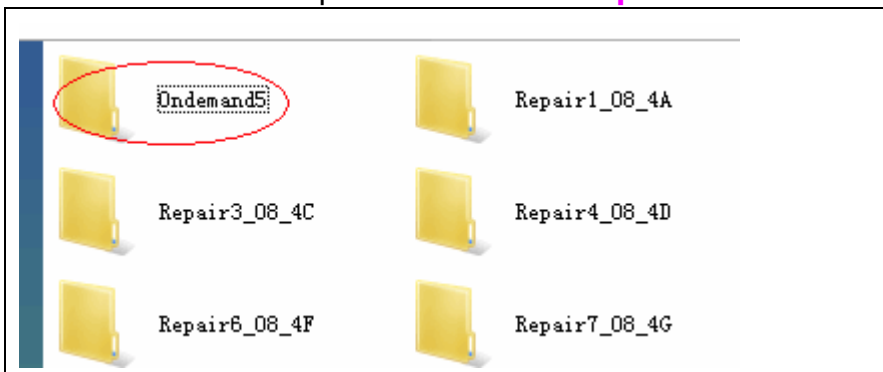
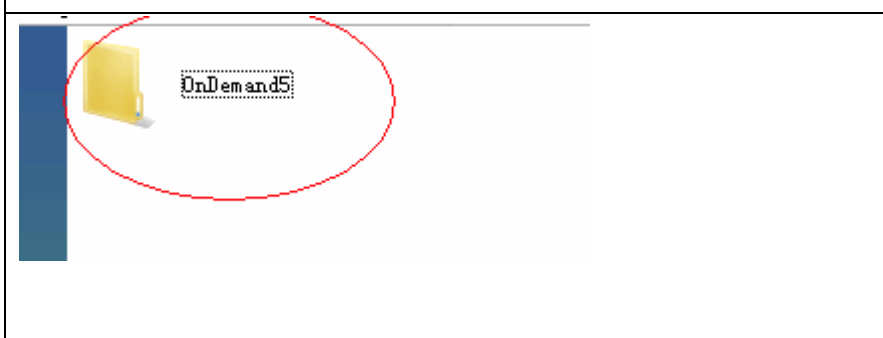

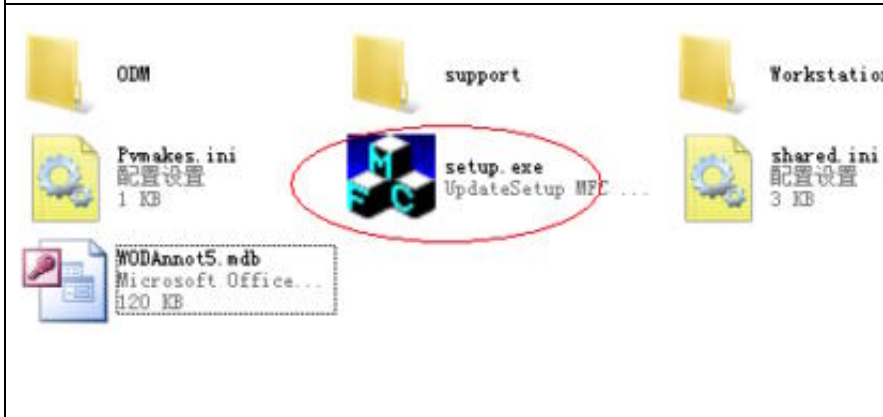
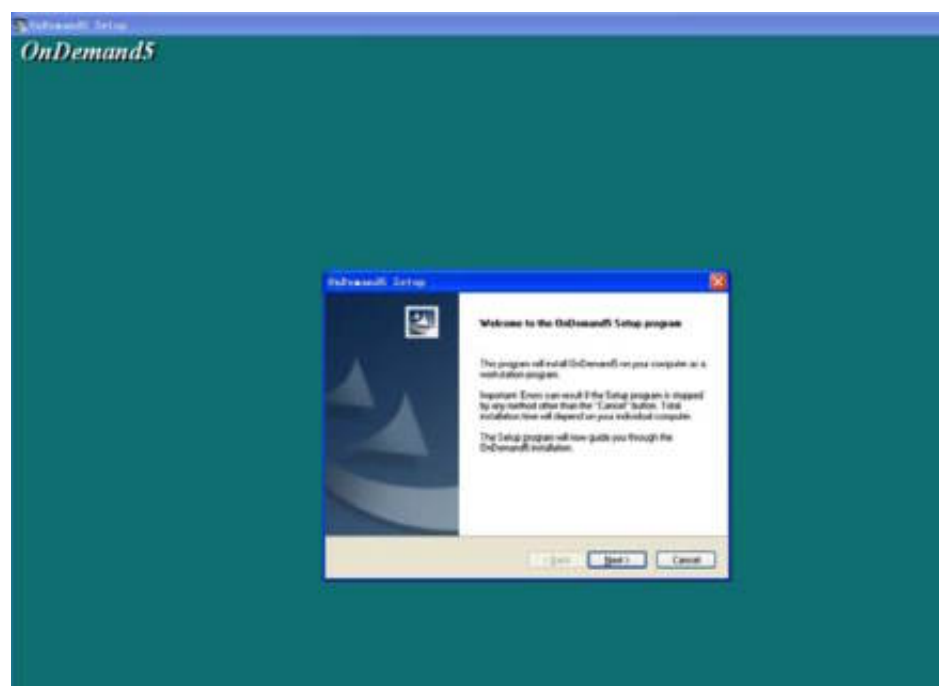


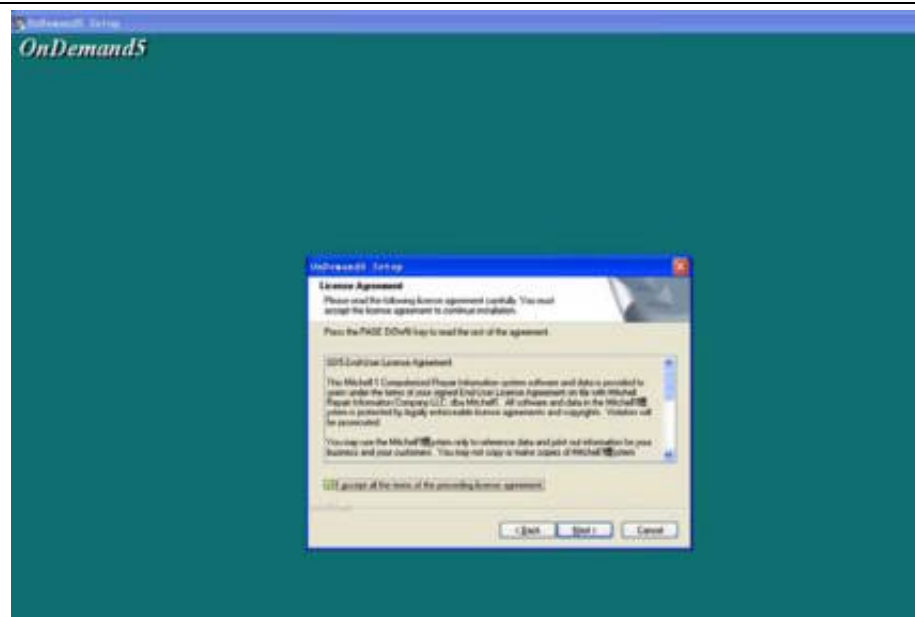
Step 1: copy folder **OnDemand5** to F disk. then open **OnDemand5**; find **Shared** and open, run the **setup.exe** file to install.

	<p>Open the folder setup</p>
	<p>Open the folder OnDemand5</p> <p>Attention : when you Complete installation,don't delete this folder, or You will not be able to use it normally.</p>
	<p>Open the folder Shared</p>
	<p>Run setup.exe</p>

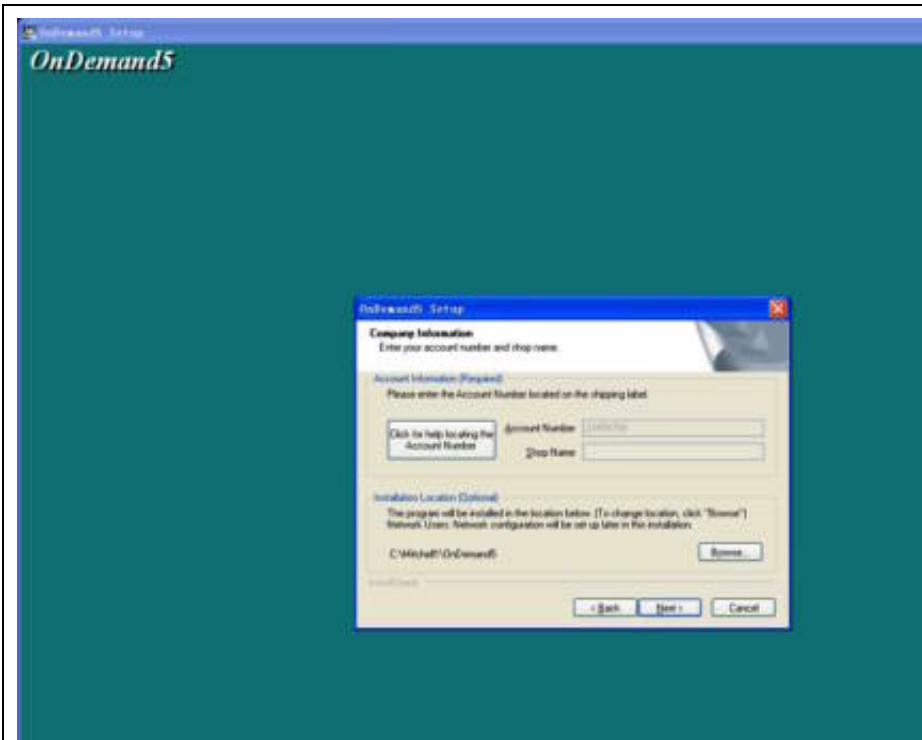
Step 2:



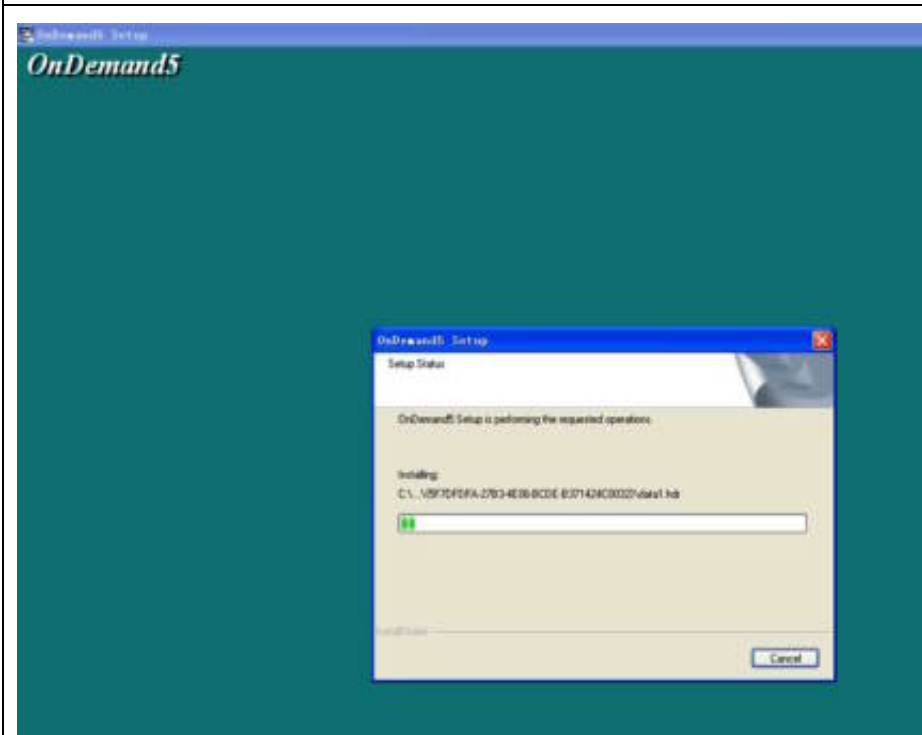
When this dialog box appears, click <Next> to go on



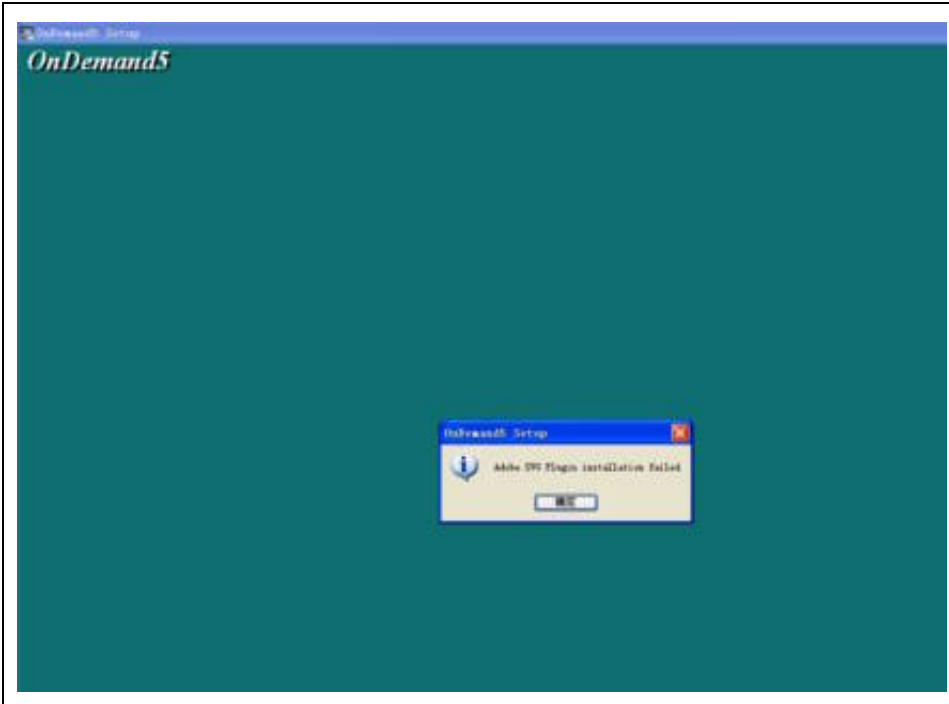
Select **I accept all the terms of preceding license agreement**, then click <Next> to go on



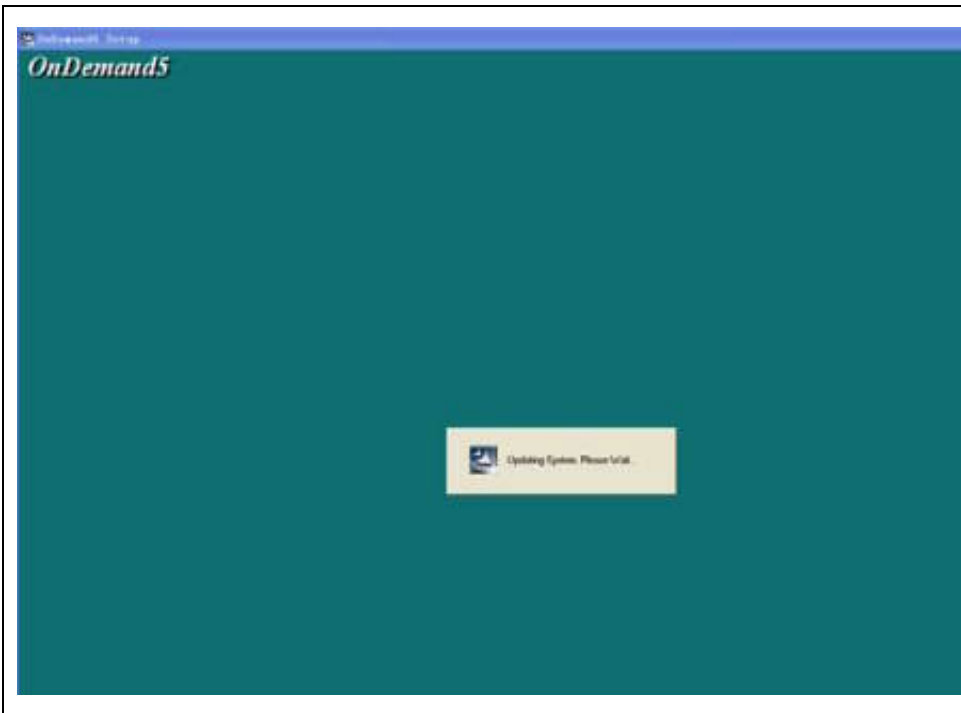
click <Next>
to go on



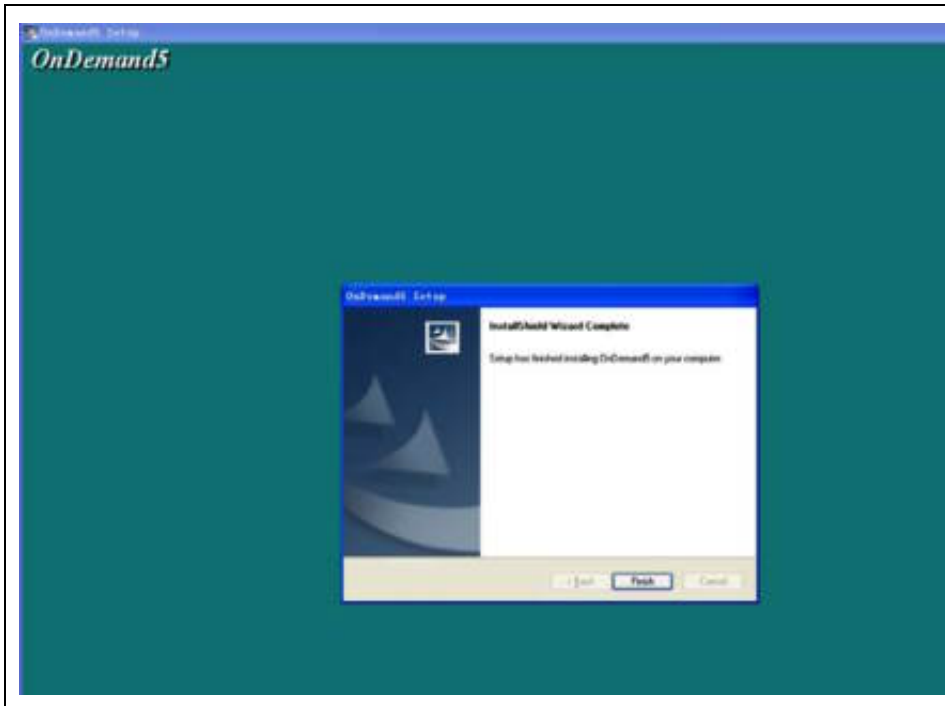
installing



click
<OK> to
go on

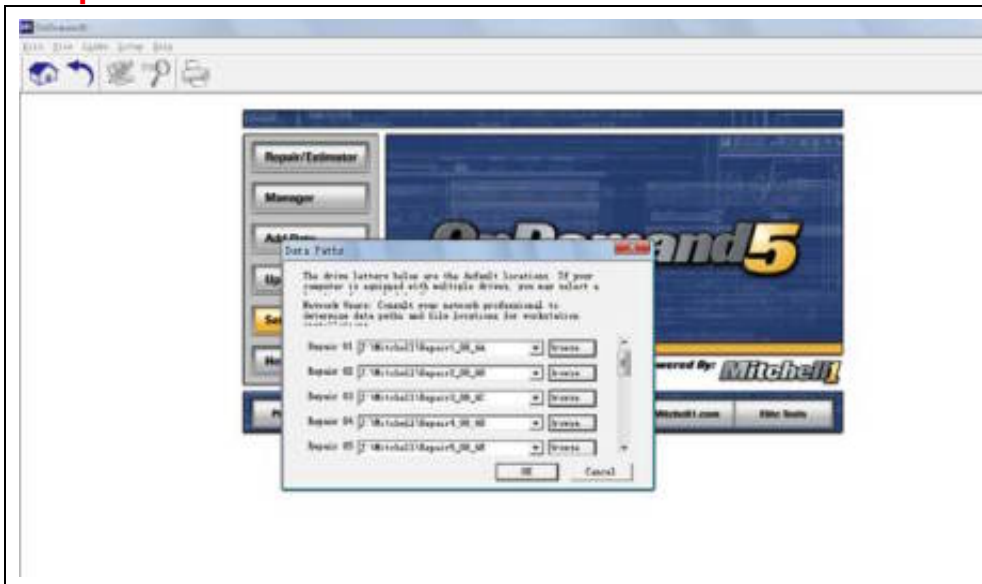


installing

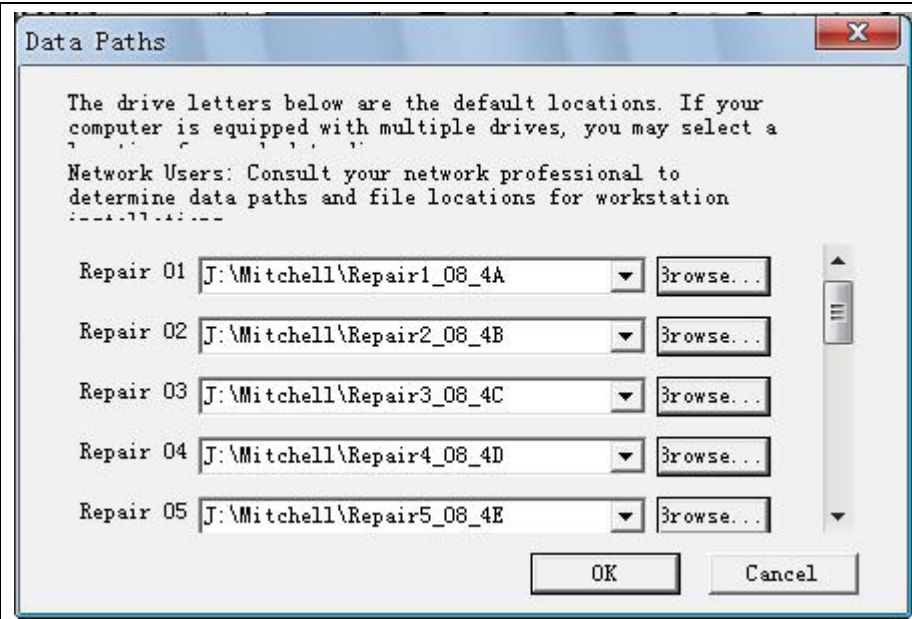


Click **finish** to complete

Step 3:

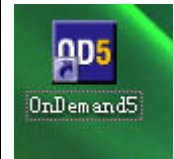
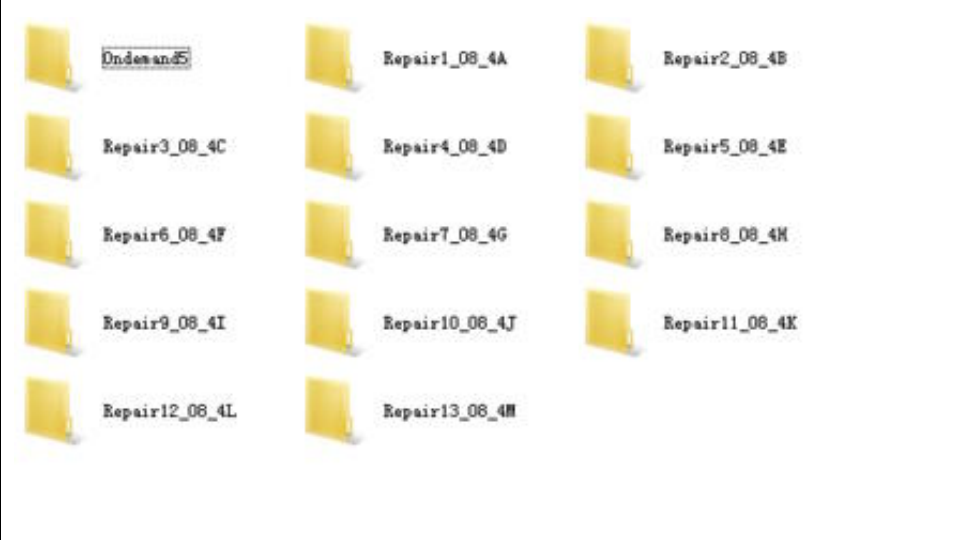


After finish, there will be dialog box like this picture.



In this dialog box load the data paths at one time.

(In the second folder A to K are the data folders, write the folders' paths to the DATA Paths dialog box Repair 1 to 13 in turn. As picture shows, the data file is on the J: disk, mitchell folder, so the data file path for Repair 1 is H: \ mitchell \ Repair1_08_4A, so on and so forth, write the other paths in turn, then select OK to finish the data loading) .



Software installation is completed, run **OnDemand5** desktop icon to use the software