

هذه الطريقة الصحيحة لتحديث البرامج موضحة بالصور

LAUNCH

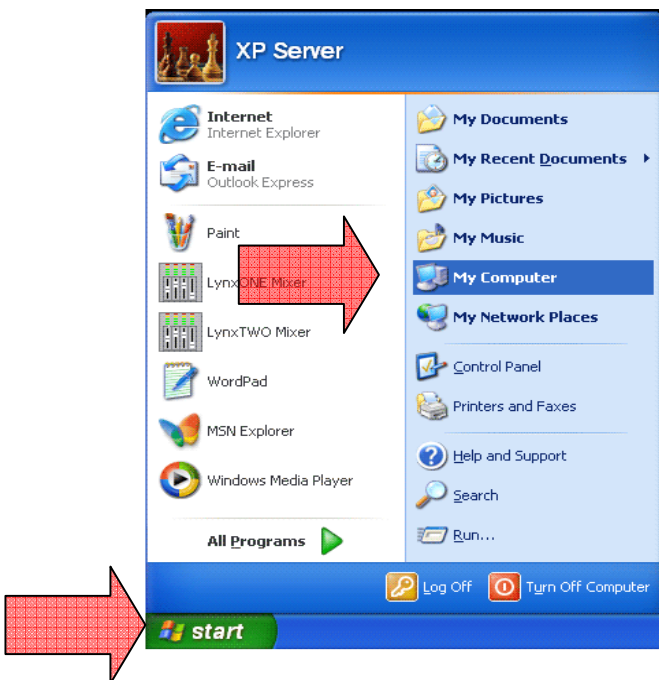
GETTING READY

Remove **Compact Flash (CF) Card** and the **CF Card Adapter** from the X431 box
(Silver **USB Adaptor**)

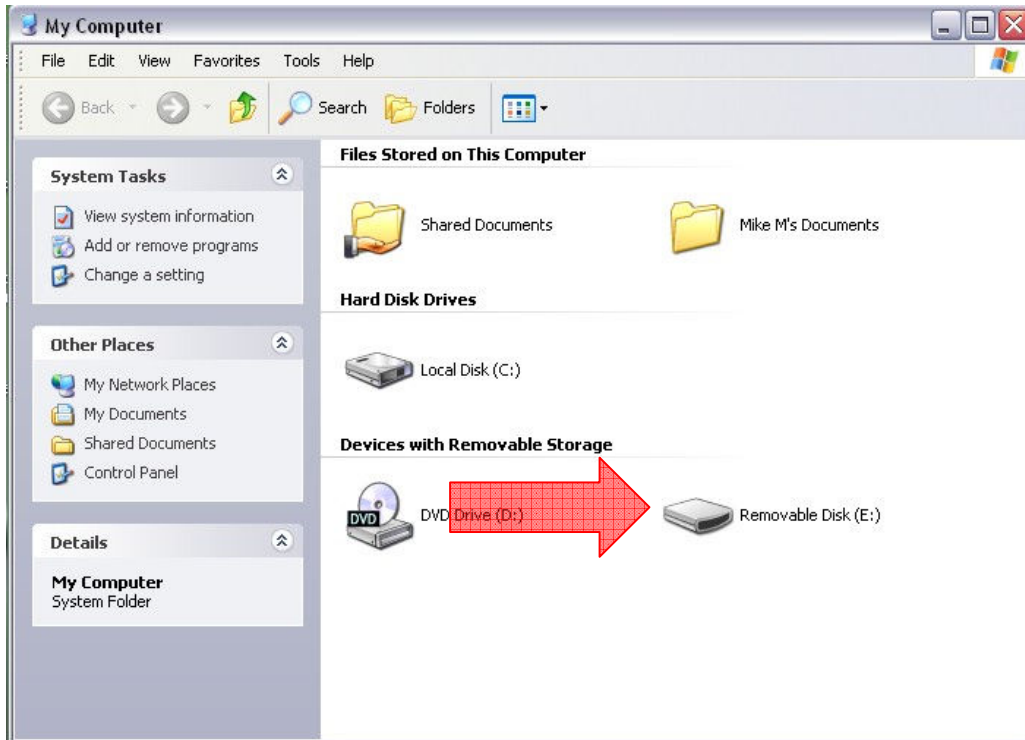
Now plug in your **CF Card** and **CF Card Adapter** into USB Port



Left click on “**Start**” and locate “**My Computer**” *Vista models (COMPUTER)*



Open **My Computer** on your Desktop and find your **Drives Removable Storage**.



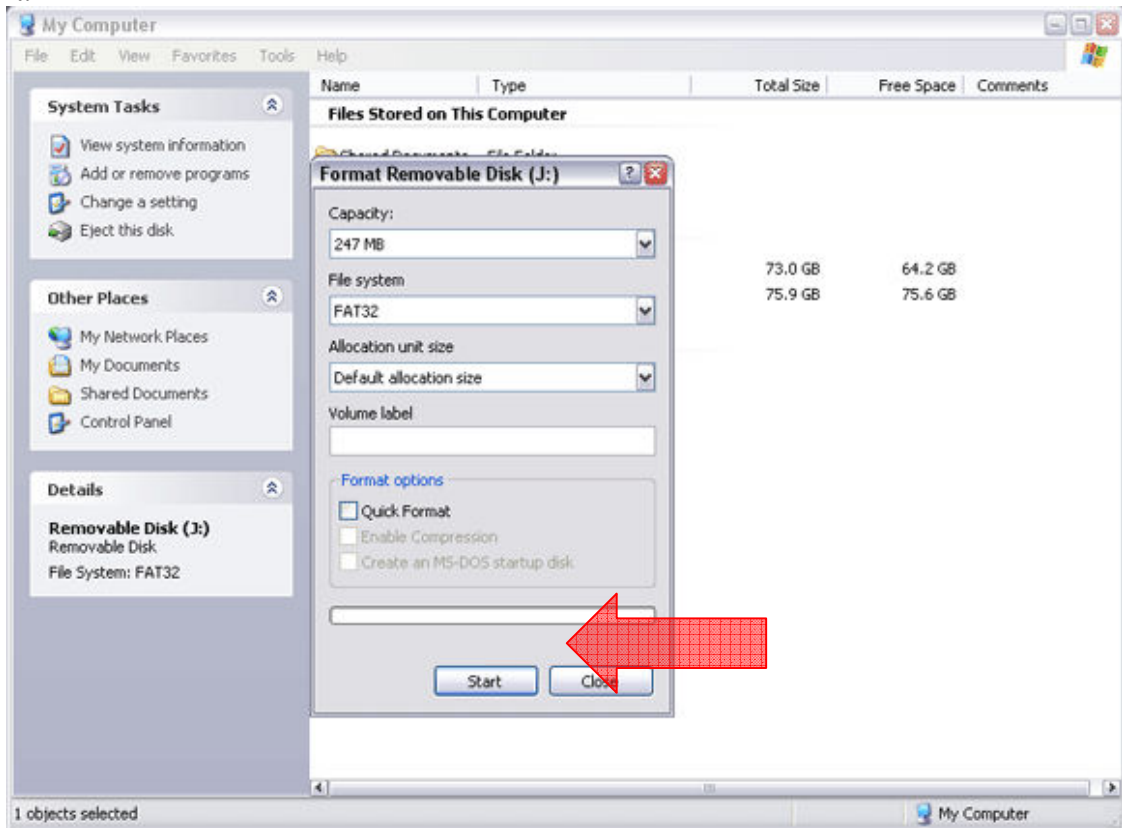
Locate the section **Removable Storage: Identify removable Disk.**

CF Card should pop up under the section and it should have a Letter next to it.

Example: **E:** or **F:** or **G:** or **H:**

Find and locate your **CF drive letter**, place your mouse arrow on it and **RIGHT** click on the icon. A menu will pop up find **FORMAT** and **LEFT** click on

it.



A new window will pop up, click on **START**.



A message will appear click **Ok**.

A message will appear indication **Format is Complete** click **OK**.



Note: If Format fails CF Card is bad, replace with a new card. This can be purchased at most computer stores. Do not use higher than 512MB, use a quality name brand.

Make a **NOTE** to remember what drive letter that is, Example: **E: F: G: H: etc....**
This will become the “**Target**” during **CF Card** download.

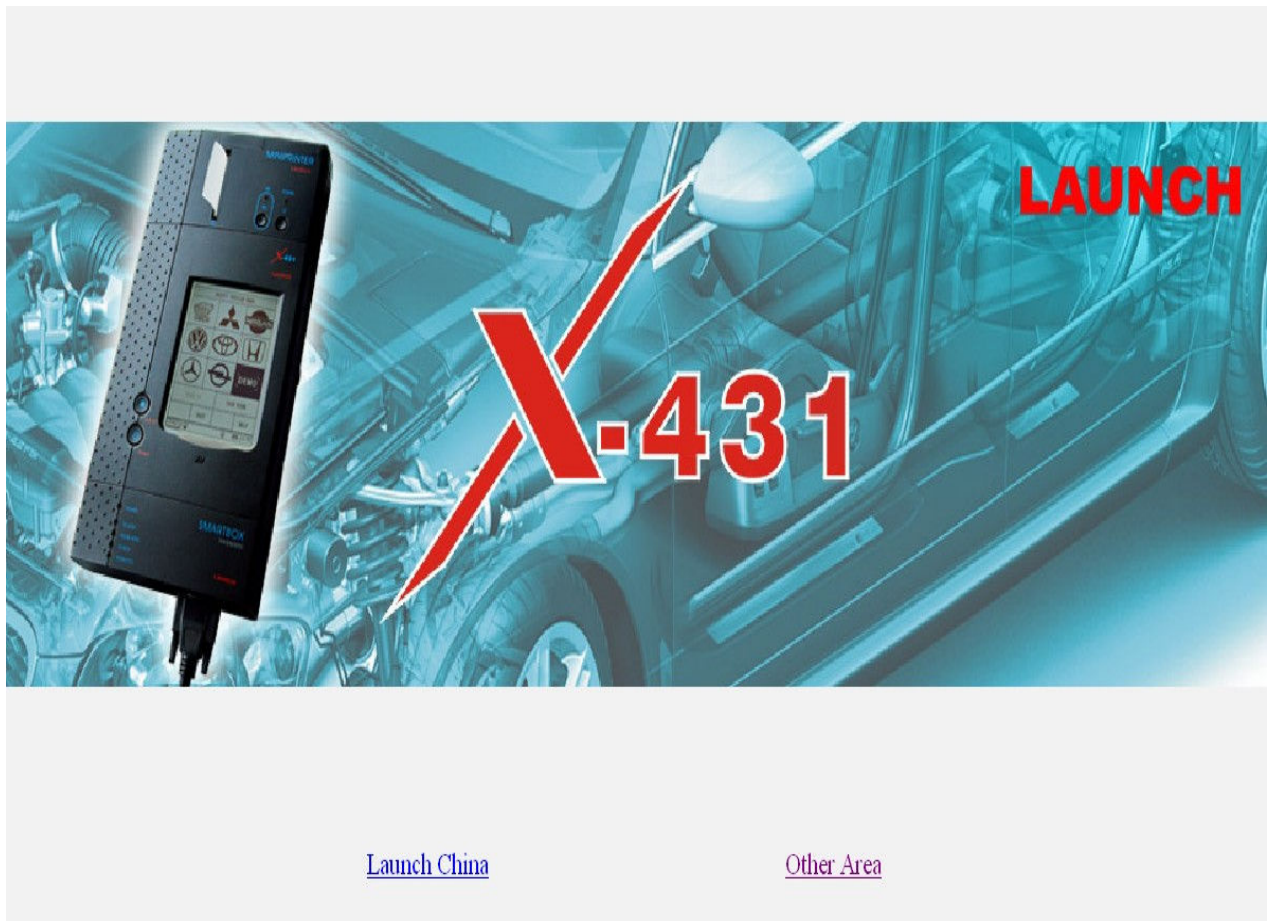
LOGING IN

Note: You need to turn off “pop up window blocker”

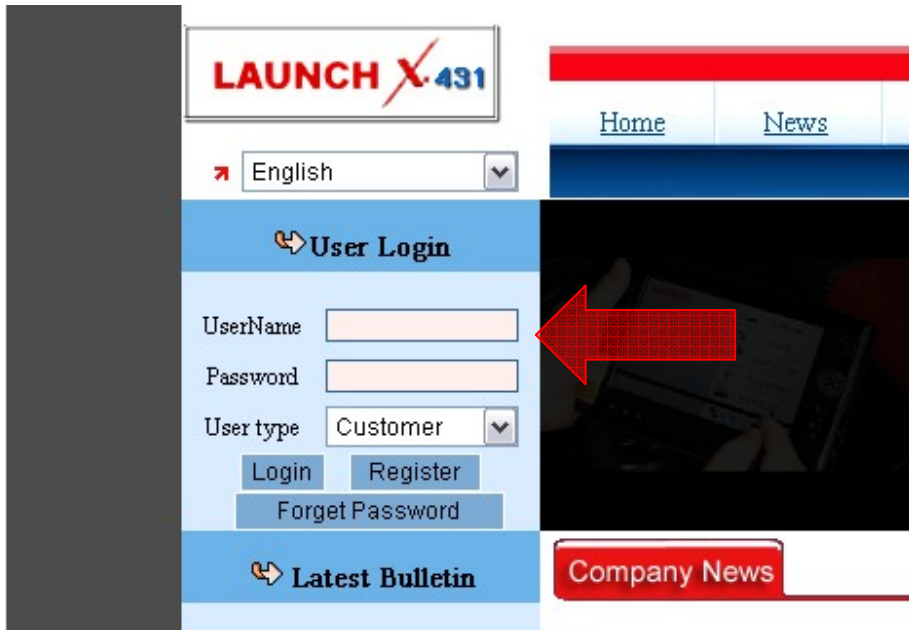
IF YOU HAVE NOT REGISTERED THE PRODUCT PLEASE DO SO.

Please refer to the printed [REGISTRATION PROCEDURE](#) or find a copy @ [LAUNCHTECHUSA.COM](#)

Open your Internet Explorer and type in WWW.X431.COM.



Chose “**OTHER AREA**” (**IF OTHER AREA IS DOWN (not responding) CHOOSE CHINA**)



You should write this down, if forgotten please call us at 562-463-1580 and ask for **Technical Support** we will need your **Serial Number** and Confirm Info.

Log in using your **USERNAME** and **PASSWORD**. In the box where you type in user name and password, you will see a third item; it should be **“customer”**

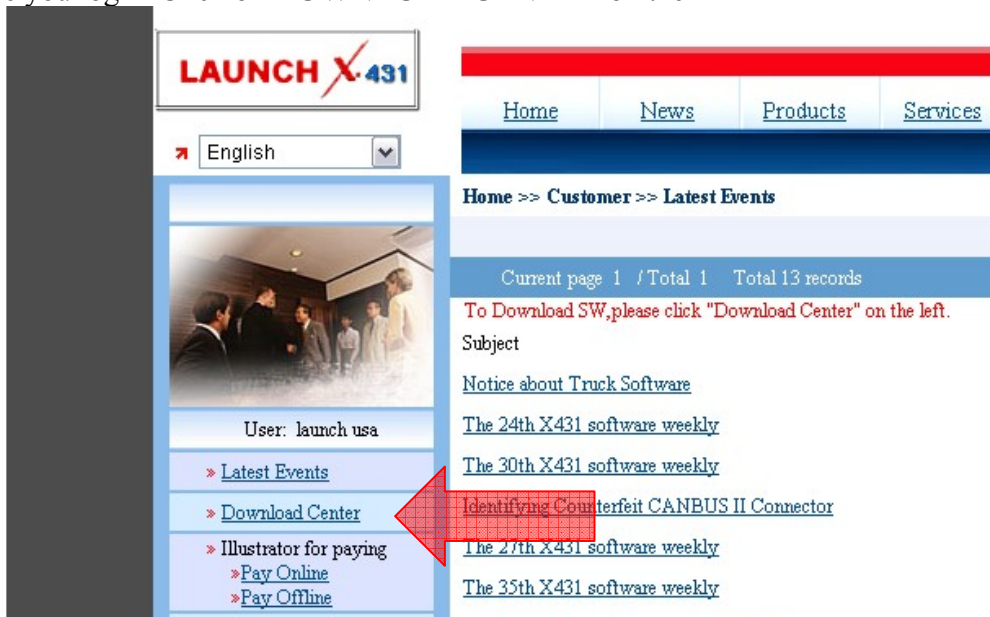
Example:

User Name: **X431demo**

Password: **Launchusa**

User type: **Customer**

Once you log in Click on **DOWNLOAD CENTER** on the **LEFT**



If the System asks you to buy new versions your subscription term has ended, you can still download previous versions, but newer versions will need to be purchased. The current purchase price for one year is \$799.00

Contact your **TECHNICAL SUPPORT** for Purchase. **1-877-LAUNCH-9**

DOWNLOAD CENTER

Once in the **DOWNLOAD CENTER** page you can see all the Drivers marked “a, b, c, d,” and all the downloadable Vehicles if you scroll down...

[Home](#) >> [Customer](#) >> [Download Center](#)

Number	Software Name	Latest version	Release date	Download Version	Language	
a	X431 SYSTEM DATA	10.82	2007-05-14	10.82	English	<input type="button" value="Down"/>
b	X431 DISPLAY PROGRAM	14.12	2006-06-29	14.12	English	<input type="button" value="Down"/>
c	X-431 DISPLAY	14.23	2007-09-20	14.23	English	<input type="button" value="Down"/>
d	X431 UPDATE TOOLS	5.0	2007-07-18	5.0	English	<input type="button" value="Down"/>

NOTE LETTERS ARE NOT IMPORTANT THE NAMES OF THE DRIVERS ARE IMPORTANT

!!!!!!IMPORTANT MODEL INFORMATION!!!!!!

X431 And X431 INFINITE/TOOL

You will need 3 Drivers LOWERCASE letters,

1-X431 SYSTEM DATA,

2-X431 DISPLAY PROGRAM,

3-X431 DISPLAY,

4- Install (RUN) X431 UPDATE TOOLS

LAUNCH X-431

Home | News | Products | Services | Datums | Web_Magazine | AboutUs

English

Home >> Customer >> Download Center

SmartBox: 980241323600 | Valid date

Number	Software Name	Latest version	Release date	Download Version	Language	
a	X431 SYSTEM DATA	10.82	2007-05-14	10.82	English	Down
b	X431 DISPLAY PROGRAM	14.12	2006-06-29	14.12	English	Down
c	X-431DISPLAY	14.23	2007-09-20	14.23	English	Down
d	X431 UPDATE TOOLS	5.0	2007-07-18	5.0	English	Down
A	X431-SENSORBOX	1.02	2005-11-23	1.02	English	Down
B	X431 DISPLAY(South Africa only)	14.23	2007-09-20	14.23	English	Down
C	X431-PCLINK DISPLAY(PC)	2.01	2005-11-03	2.01	English	Down

Show all

At the upper half of the page you will see:

Number	Software Name	Latest version	Release date	Download Version	Language	
→	X431 SYSTEM DATA	10.82	2007-05-14	10.82	English	Down
→	X431 DISPLAY PROGRAM	14.12	2006-06-29	14.12	English	Down
→	X-431DISPLAY	14.22	2007-08-09	14.22	English	Down
→	X431 UPDATE TOOLS	5.0	2007-07-18	5.0	English	Down

To the left under the heading “number” these are your drivers

You will need Drivers **LOWERCASE**,

1-X431 SYSTEM DATA,

2-X431 DISPLAY PROGRAM,

3-X431 DISPLAY,

4-AND INSTALL (RUN) X431 UPDATE TOOLS

The order might be different all that is important is that the names are correct.

You will also find

UPPER CASE A, B, C do not download these.

Unless you have purchased option software, such as PC Link or Sensor Box

DO NOT DOWNLOAD UPPER CASE A, B, C

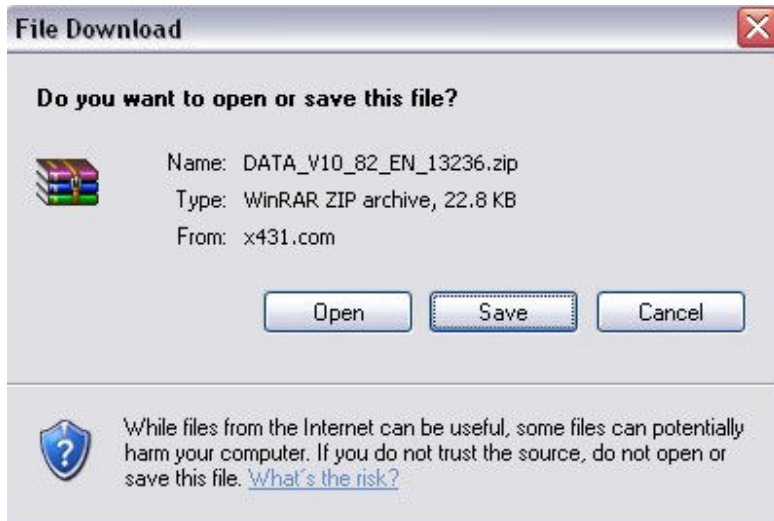
A	X431-SENSORBOX	1.02	2005-11-23	1.02	English	Down
B	X431 DISPLAY(South Africa only)	14.23	2007-09-20	14.23	English	Down
C	X431-PCLINK DISPLAY(PC)	2.01	2005-11-03	2.01	English	Down

See below for your Driver instructions:

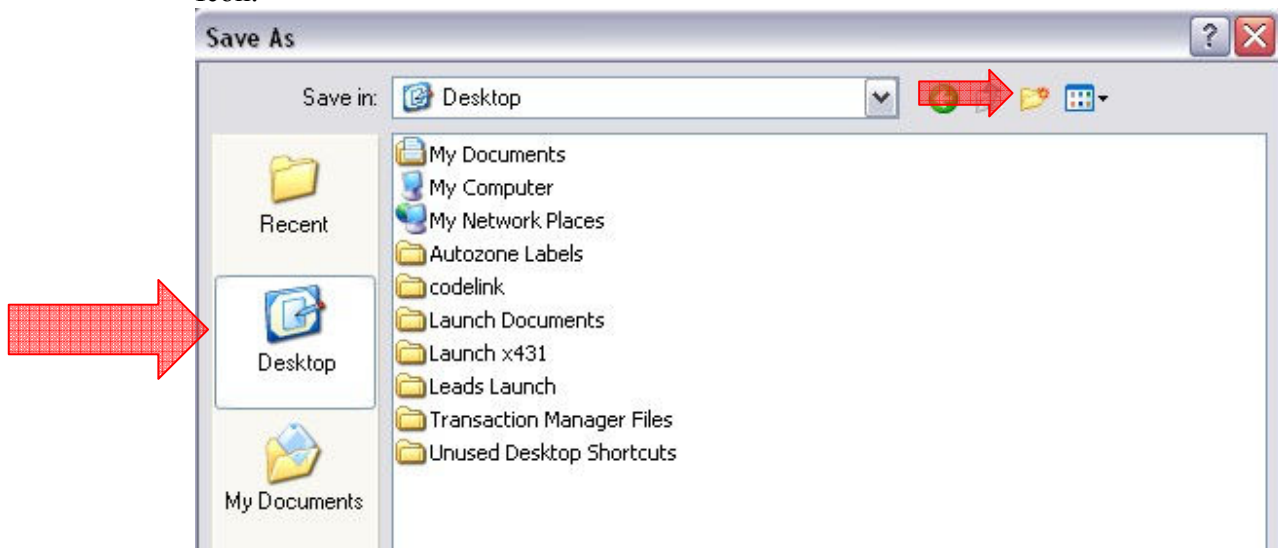
Home >> Customer >> Download Center

Number	Software Name	Latest version	Release date	Download Version	Language	
a	X431 SYSTEM DATA	10.82	2007-05-14	10.82	English	Down
b	X431 DISPLAY PROGRAM	14.12	2006-06-29	14.12	English	Down
c	X-431DISPLAY	14.23	2007-09-20	14.23	English	Down
d	X431 UPDATE TOOLS	5.0	2007-07-18	5.0	English	Down

Begin by clicking **DOWN** for driver **SYSTEM DATA** Select **SAVE**.



Now on the **SAVE** window look to the left and click on the **DESKTOP** Icon.



Verify you clicked on the **DESKTOP** icon by the **FOLDER TITLE** at the top of the window.

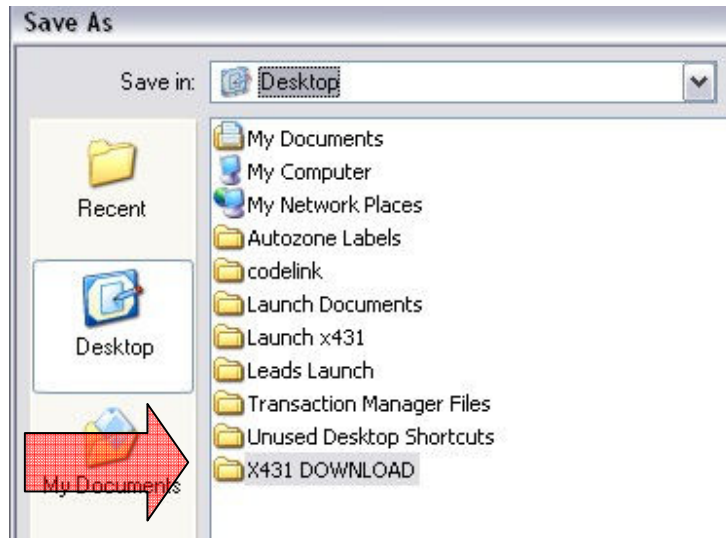
Next find the **New Folder** –

(The small yellow folder with red star on upper right).

Click on that little yellow folder with red star.

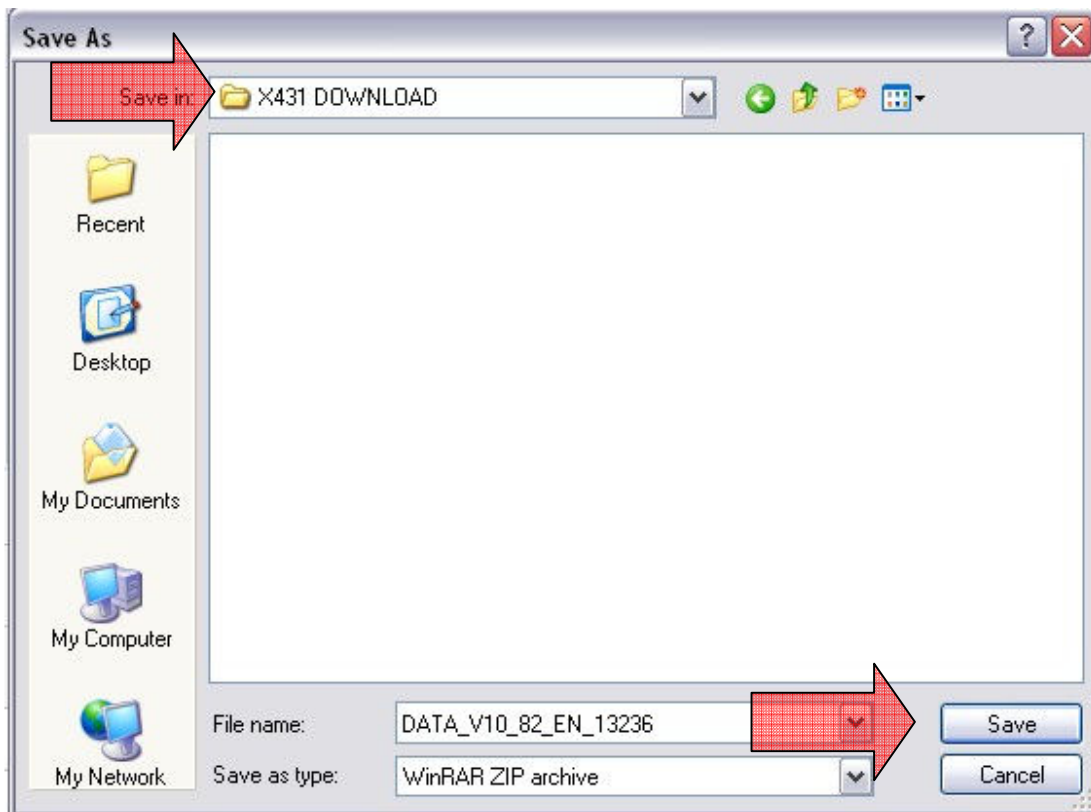
A box will appear with the words **NEW FOLDER**

Type in to Rename **the folder** Ex: ***X431 DOWNLOAD***



Remember the Name you will need it later, and also for future updates.

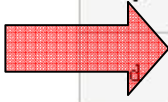
Now click **OPEN**
(Verify You save in the **X431 DOWNLOAD** Folder)
and **SAVE**.



All other **DOWNLOADS** will go into the same folder by most recent saved Computer **MEMORY.***

Now click **DOWN** on Driver (**DISPLAY PROGRAM**)

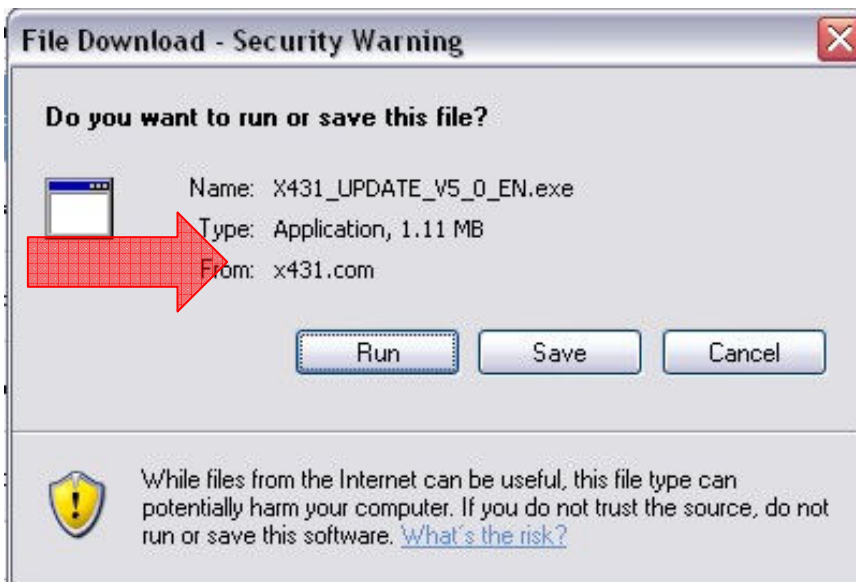
Number	Software Name	Latest version	Release date	Download Version	Language	
a	X431 SYSTEM DATA	10.82	2007-05-14	10.82	English	Down
b	X431 DISPLAY PROGRAM	14.12	2006-06-29	14.12	English	Down
c	X-431DISPLAY	14.23	2007-09-20	14.23	English	Down
d	X431 UPDATE TOOLS	5.0	2007-07-18	5.0	English	Down



Select save and save again.*

Now click **DOWN** on Driver (**UPDATE TOOLS**)

Select **“RUN”**



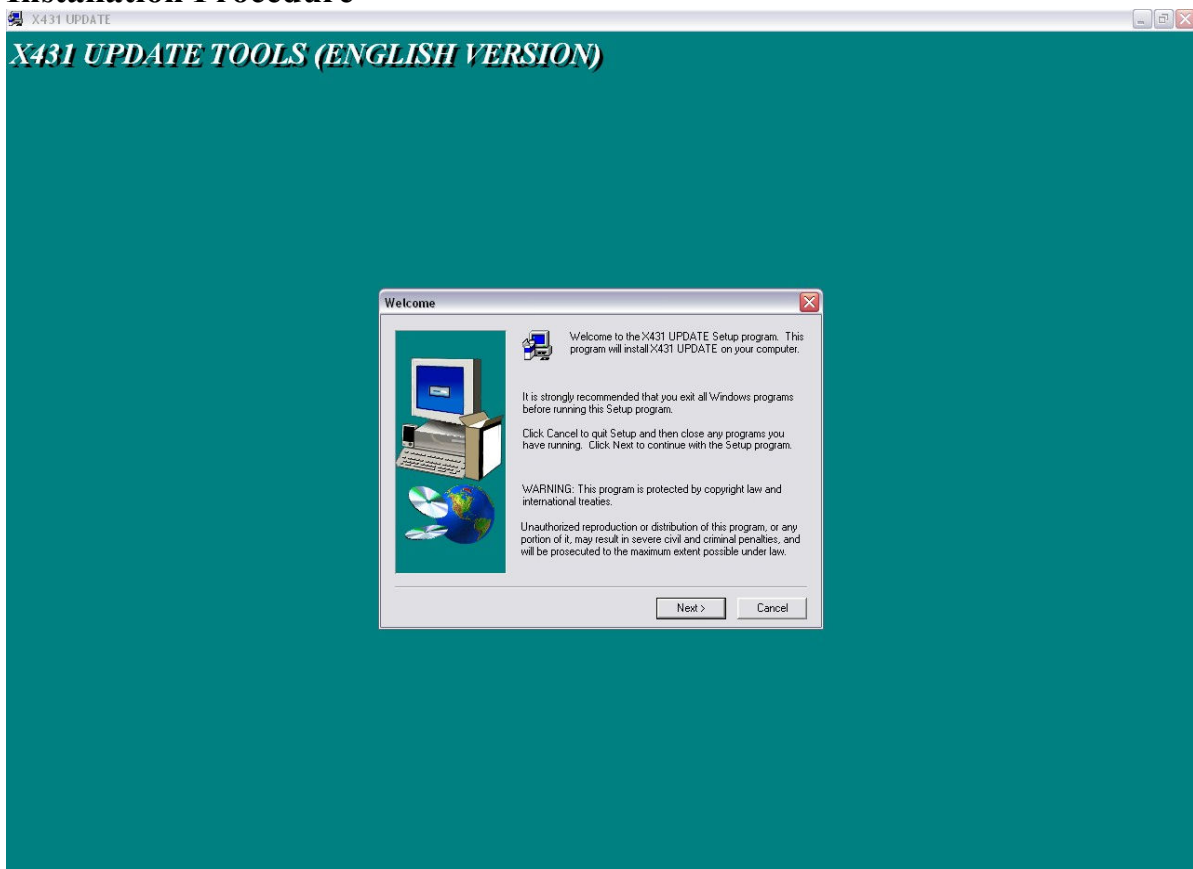
And then “RUN” once more in order to install



It is ok to trust the Software **Accept to Download** And Install Program **X431 Update**.

IF Installation screen(**Green Screen**) does not pop-up please restart Computer.

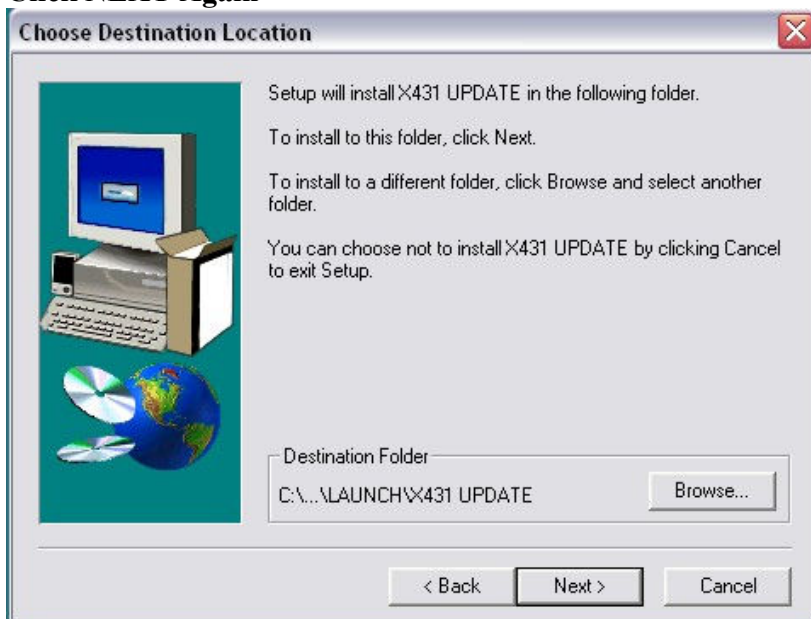
Installation Procedure



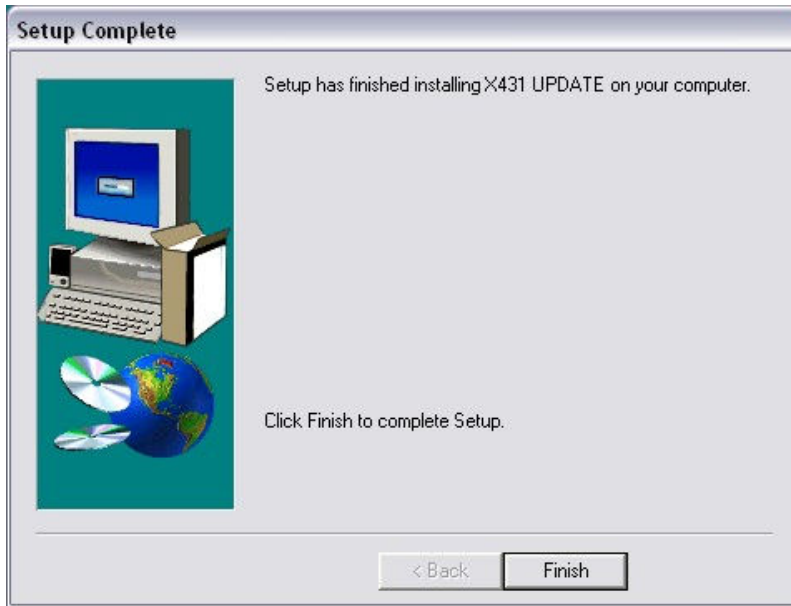
Click NEXT



Click NEXT Again



Verify the install completes 100% the select **NEXT**, then **NEXT again** and then **FINISH**.



Install Complete...

You should automatically be Brought back on to the internet download page .

If Not:

It should be at the bottom of your Task Bar or top of your screen in a box called x431 left click in order bring up your **DOWNLOAD PAGE**.

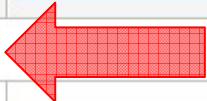
Home >> Customer >> Download Center

SmartBox: 980241323600 [Valid date](#)

Number	Software Name	Latest version	Release date	Download Version	Language	
a	X431 SYSTEM DATA	10.82	2007-05-14	10.82	English	Down
b	X431 DISPLAY PROGRAM	14.12	2006-06-29	14.12	English	Down
c	X-431DISPLAY	14.23	2007-09-20	14.23	English	Down
d	X431 UPDATE TOOLS	5.0	2007-07-18	5.0	English	Down
A	X431-SENSORBOX	1.02	2005-11-23	1.02	English	Down
B	X431 DISPLAY(South Africa only)	14.23	2007-09-20	14.23	English	Down
C	X431-PCLINK DISPLAY(PC)	2.01	2005-11-03	2.01	English	Down

[Show all](#)

To find your vehicles you want, scroll down and select **Down** on each to download.
 If you want view all manufacturers on one page and Click on **SHOW ALL that is 36 items. However DO NOT click on or put in an “X” in the small blue box, just right of the icon.**

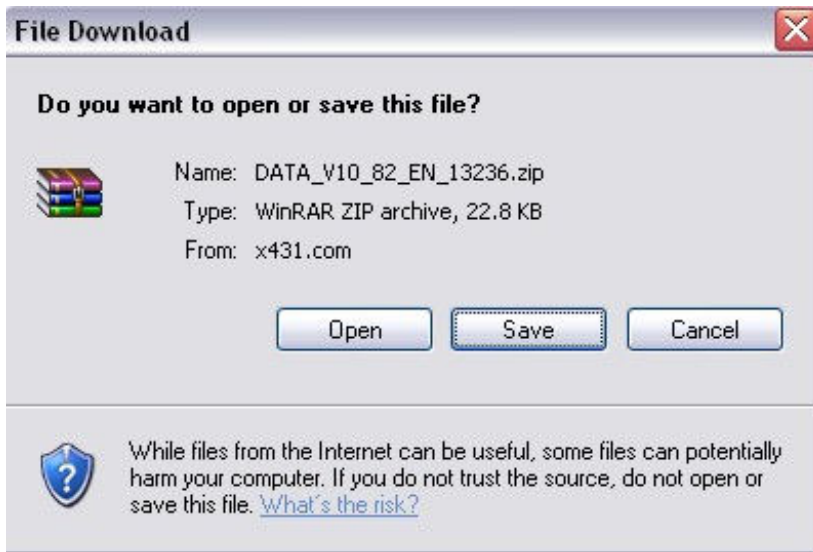
2.01	2005-11-03	2.01	English
<input type="button" value="Show all"/> 			
24.05	2007-09-17	24.05	English

Example: Audi, BMW, MERCEDEZ, PORSCHE, HONDA, LAND ROVER, etc

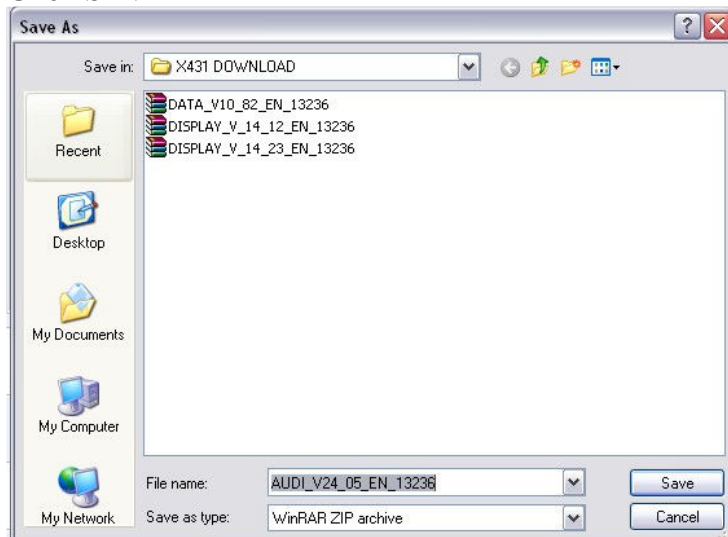
Continue by clicking **DOWN** on the specific vehicle car line then continue to by clicking **SAVE** and **SAVE** again **ONE BY ONE**. This should take about 5-15 Minutes depending on computer speed for All the Vehicles.

Car line Examples: 1-11

<input type="checkbox"/> 1	AUDI	24.05	2007-09-17	24.05	English	View Down
<input type="checkbox"/> 2	BMW	31.05	2007-08-21	31.05	English	View Down
<input type="checkbox"/> 3	CHEVY	10.07	2007-07-18	10.07	English	View Down
<input type="checkbox"/> 4	CHRYSLER	16.40	2007-08-29	16.40	English	View Down
<input type="checkbox"/> 5	CITROEN	20.20	2007-06-22	20.20	English	View Down
<input type="checkbox"/> 6	DAEWOO	21.04	2007-09-06	21.04	English	View Down
<input type="checkbox"/> 7	DEMO	11.03	2007-07-16	11.03	English	View Down
<input type="checkbox"/> 8	OBD CAN	12.06	2007-07-16	12.06	English	View Down
<input type="checkbox"/> 9	FIAT	19.15	2007-09-24	19.15	English	View Down
<input type="checkbox"/> 10	FORD(USA)	35.90	2007-09-28	35.90	English	View Down
<input type="checkbox"/> 11	GM	28.00	2007-09-25	28.00	English	View Down



Click SAVE



Click SAVE AGAIN

Note: You should see at the top of the window “Saved As” and verify “Saved in”:

NOTE: CLICK ONE BY ONE: DOWN---SAVE---SAVE

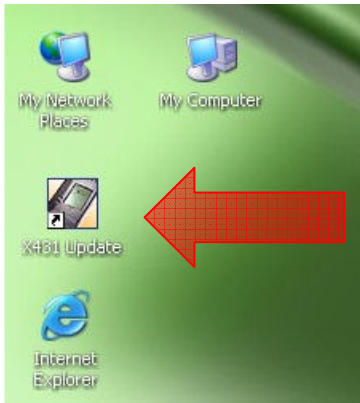
Note: If you see an Error when you try to **DOWNLOAD** a specific car just skip it and try it again **LATER**, If you continue to have the same error **FINISH** the process the Call **Technical Support**.

! DO NOT DOWNLOAD IN BATCH!

TRANSFERRING SOFTWARE

Insert the CF Card into CF card Adapter and insert into your computer.

Find the Icon labeled **X431 Update** on your **DESKTOP** it looks like a small picture of the **X431** with an orange Background.

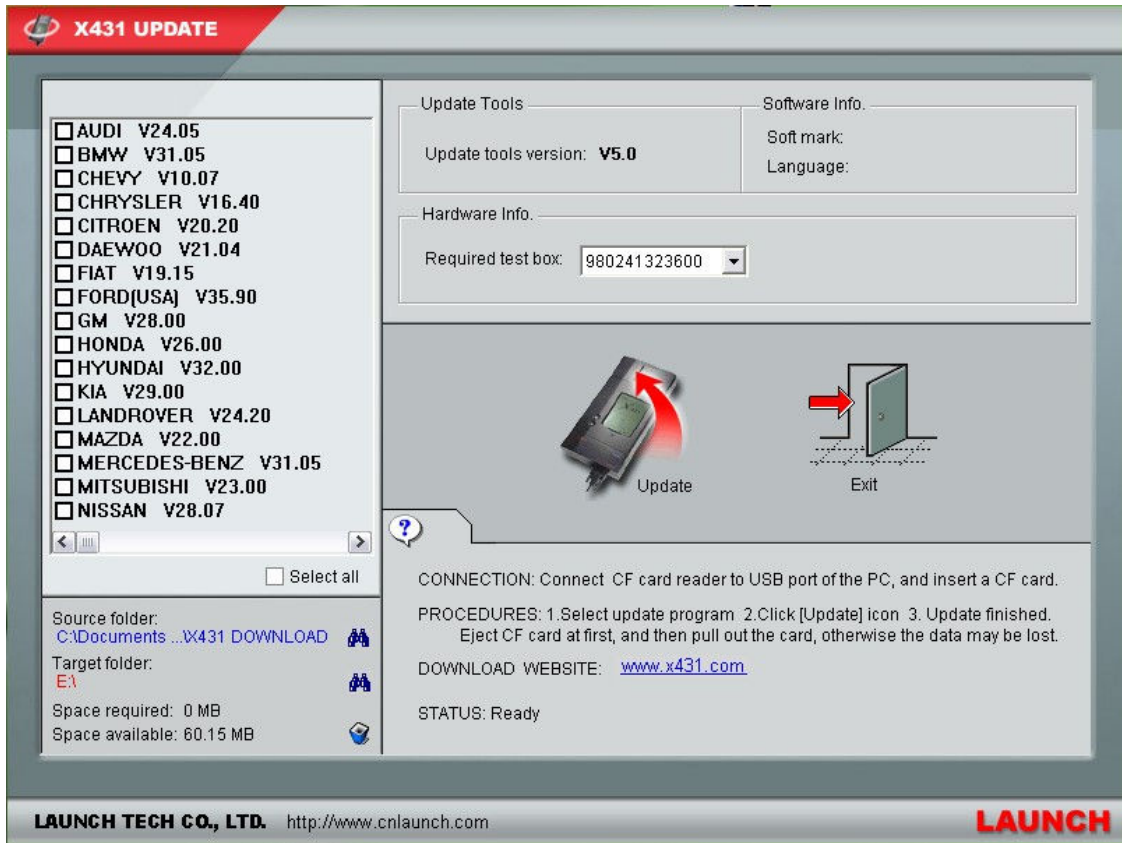


This program was installed when **Driver X431 UPDATE TOOLS** was installed, if not found try again to Download and to try Install again.

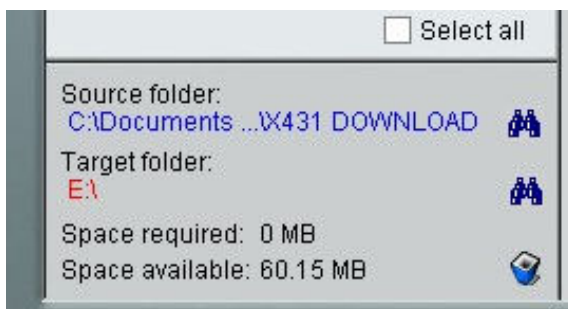
Double Click on the Icon

Open the Application.

X431 UPDATE



When the application loads verify Two Small **BINOCULARS** on the **BOTTOM** of the WINDOW.



One is labeled **SOURCE (Top one)** and one is labeled **TARGET (bottom one)**.

SOURCE should be the **NEW FOLDER** we created –**EX: x431 DOWNLOAD**

TARGET should be the **DRIVE** the **CF card** is under.

If drive is not correct click on the source binocular and Folder



If target is not correct select correct drive Ex: Drive E



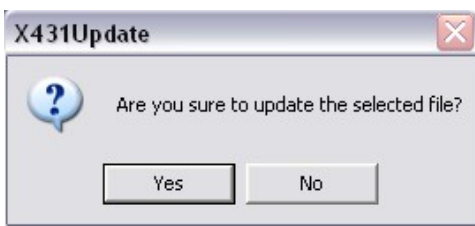
Confirm and select all cars



Click on the Update Icon



Click YES

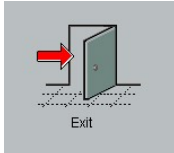


Wait for Loading on CF Card
Approx 3 mins.

UPDATE SUCESFULL

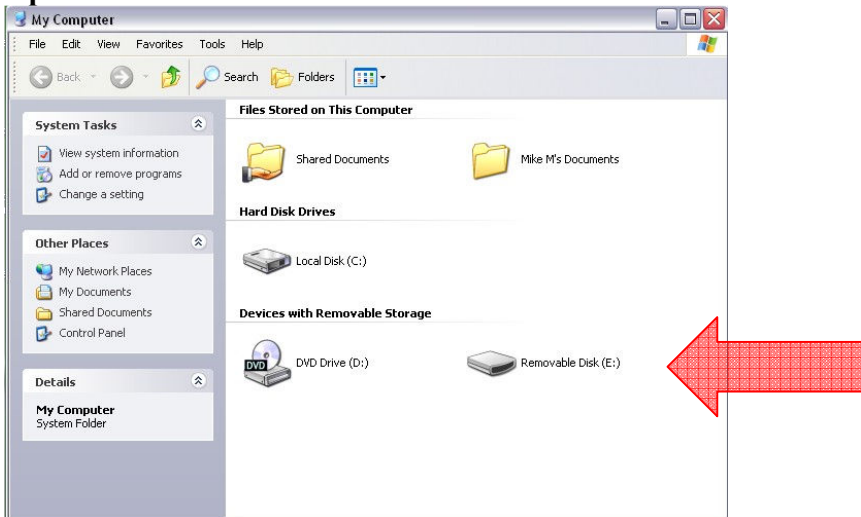


Click EXIT



And Click to EXIT

Open MY COMPUTER and find drive REMOVABLE STORAGE (CF Card)



Right click on “Removable disk” icon Ex: E

Left Click on “Eject” in the menu.....DO NOT FORMAT CARD AGAIN.....

Green light on silver USB adaptor should be solid and not flashing.

Window should read “please insert disk into drive”.....this shows that it is safe to remove compact flash card and adaptor.

Remove adaptor and compact flash card now.

You have now completed the update process.